

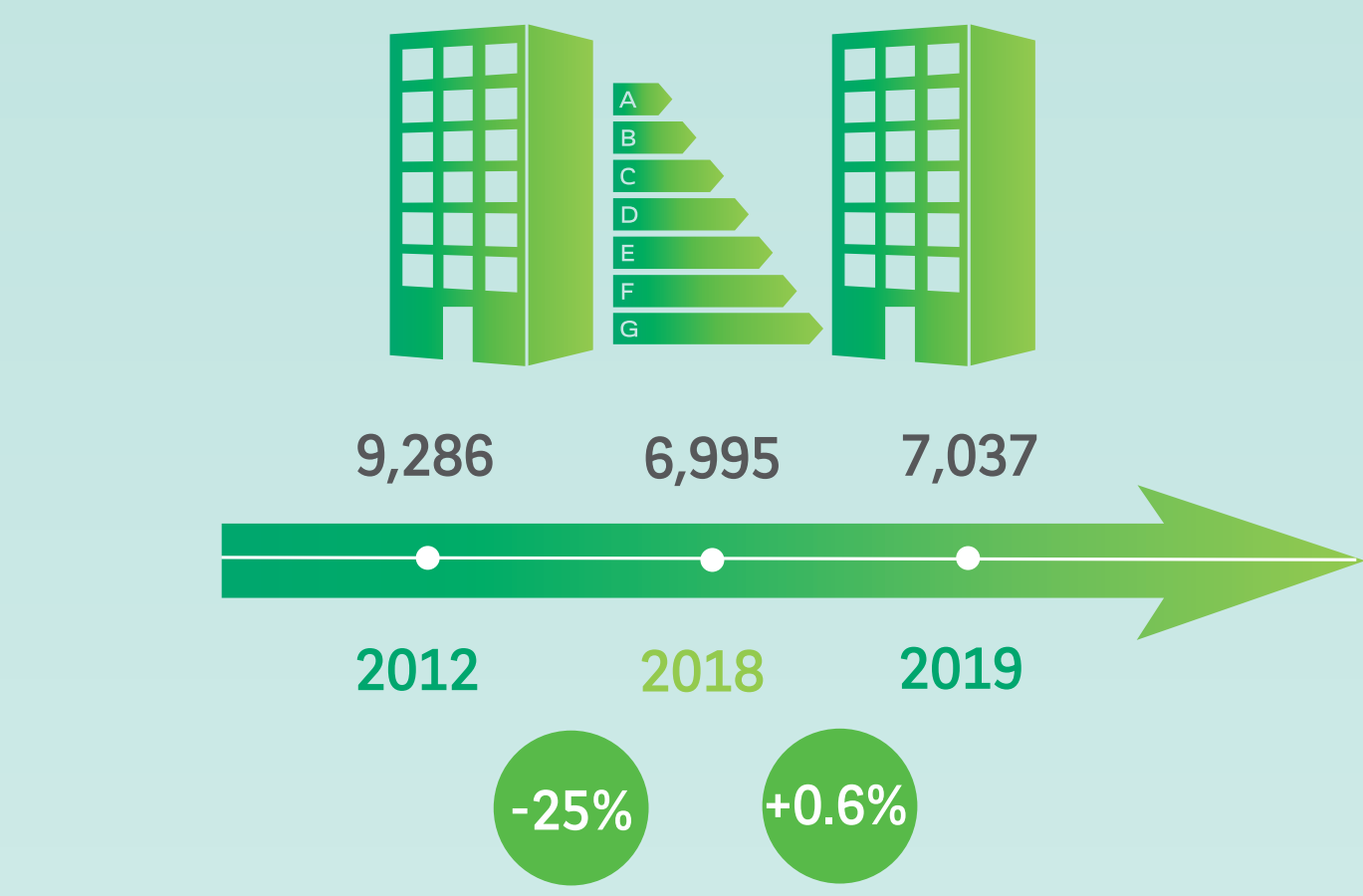
2019: THE ENVIRONMENTAL DIRECT IMPACTS

BNP Paribas has become since 2017 a carbon neutral bank, through three commitments: the reduction of CO₂ emissions from its own operation, the use of low carbon electricity (72% in 2019) and offsetting residual emissions.



GREENHOUSE GAS EMISSIONS: 2020 OBJECTIVE ACHIEVED IN 2019

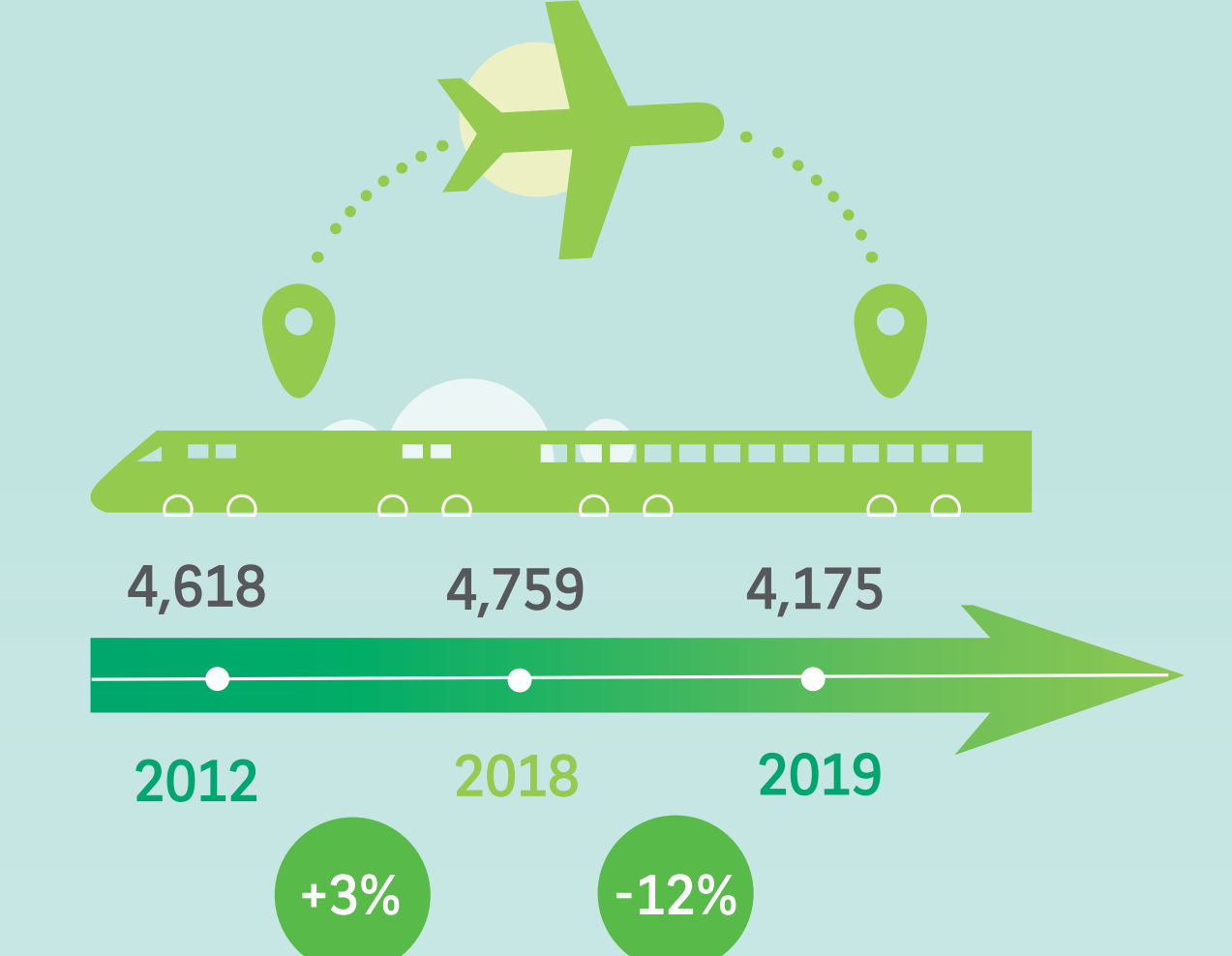
NEARLY 40 INDICATORS ARE COLLECTED AND CONVERTED INTO GREENHOUSE GAS



BUILDING'S ENERGY CONSUMPTION (kWh / employee)

Our 2019 energy consumption (1,399 GWh) is equivalent to 186,888 European households (to be compared to the 198,816 employees of the Group).

Our 2019 business travels (830 million km) is equivalent to 1,081 round-trips between the Earth and the Moon.

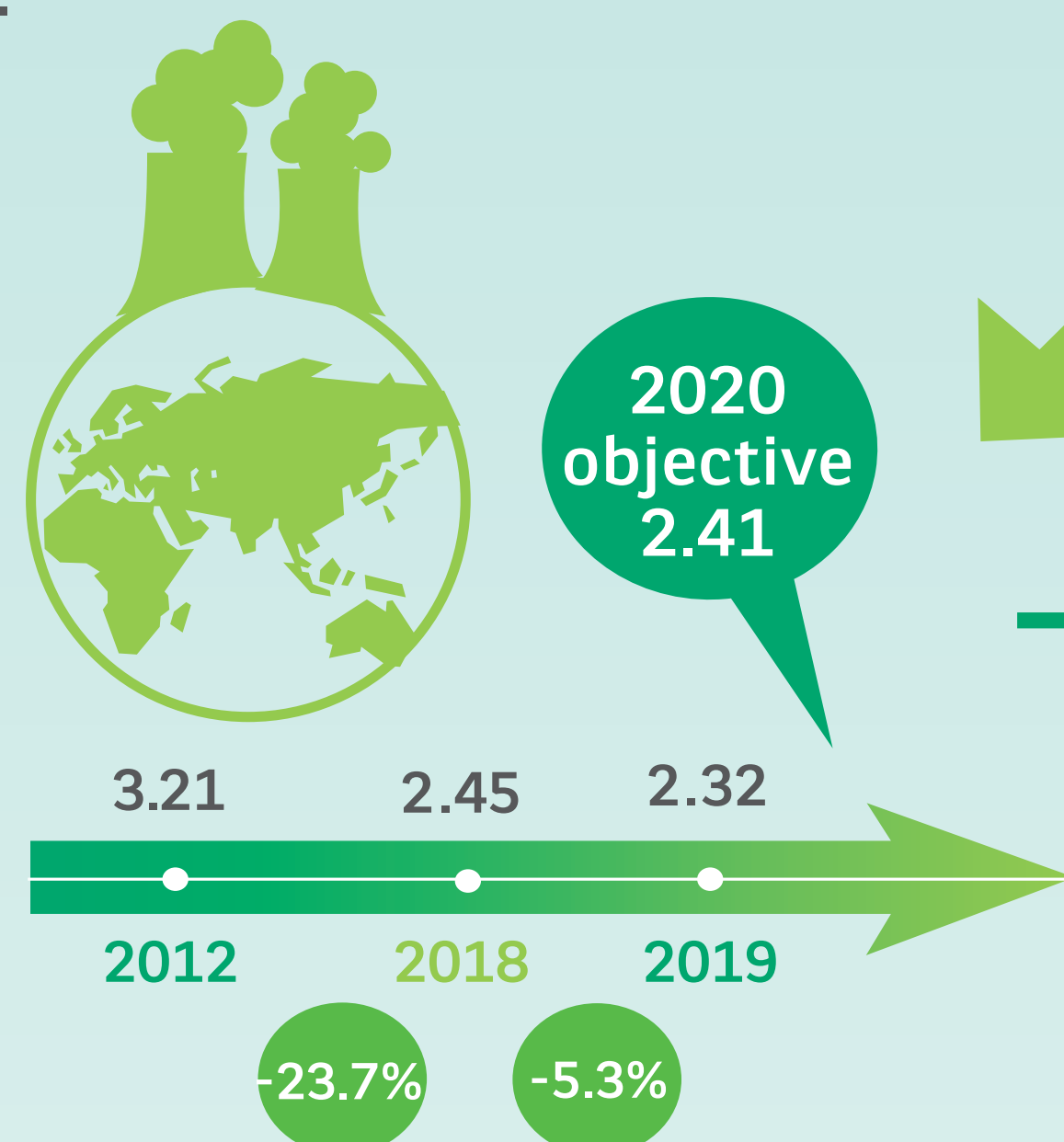


BUSINESS TRAVELS (km / employee)

26% of emissions

GHG per employee is a criteria included in the long-term compensation plan of the 6,300 top managers of the Group (GSIS).

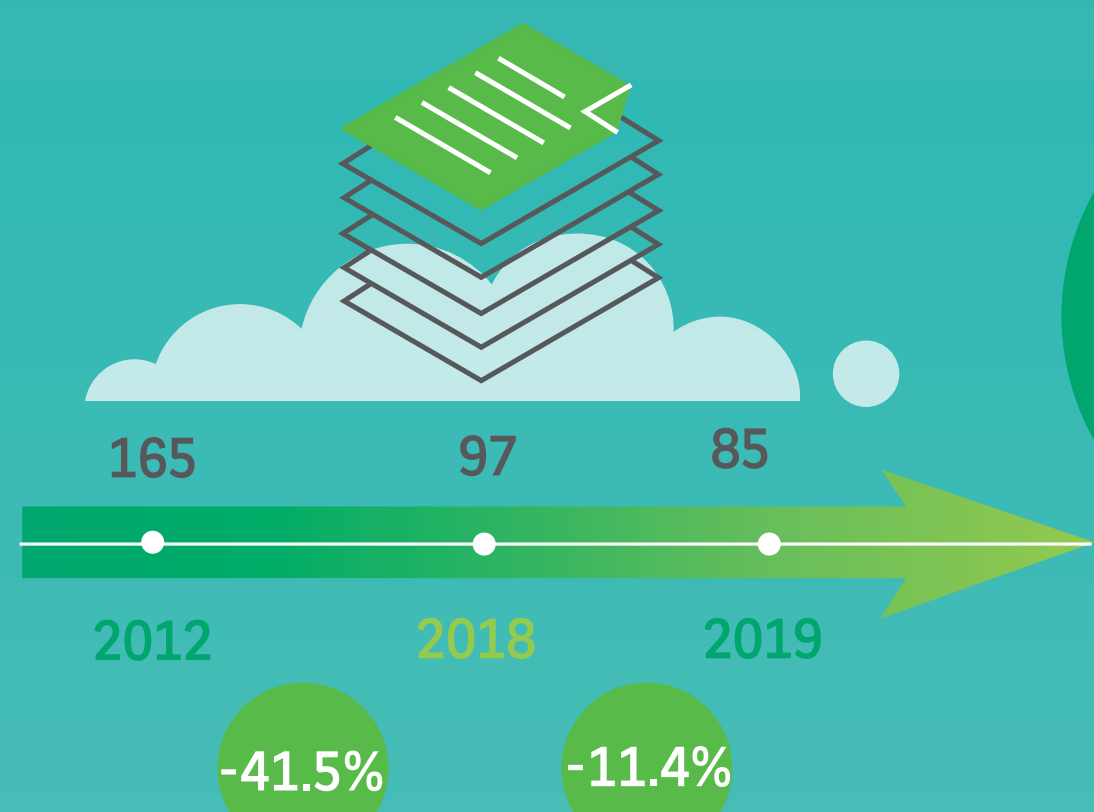
74% of emissions



GREENHOUSE GAS EMISSIONS (teq CO₂ / employee)

CONSUME LESS AND BETTER

THE GROUP IS COMMITTED TO ENCOURAGING THE CIRCULAR ECONOMY, BY REDUCING ITS PAPER CONSUMPTION AND WASTE PRODUCTION, AND BY RECYCLING WHEREVER IT IS POSSIBLE.



PAPER CONSUMPTION PER EMPLOYEE (kg / employee)

Goal achieved! Let's keep focusing on increasing our consumption of responsible paper.

The reduction of internal paper consumption determine a part of profit-sharing for collaborators in France.



RECYCLED WASTE PER EMPLOYEE (kg / employee)

Total Group waste weighted around 33 905 t in 2019.

The aim of the Group is to progress each year on the information gathering and on the recycled waste weight per employee.

In 2019, the Group offset 390,215 teqCO₂. This compensation was made for the benefit of 3 projects:

- the preservation and restoration of 200,000 hectares of forest in Kenya with the NGO Wild Life Works;
- the establishment of drinking water boreholes in Malawi with the NGO United Purpose Malawi Wash;
- the conservation of tropical peat bogs covering more than 150,000 hectares of swamp forest located in Indonesia with the NGO Permian Global.



The Group's commitments to reduce our carbon footprint are an integral part of the Green Company for Employees programme, which aims to reduce BNP Paribas' direct impact on the environment by placing employees at the heart of the process.

OBJECTIFS 2020

- 25% of GHG*
- 43% of paper*

* Per employee, compared to 2012



BNP PARIBAS

The bank for a changing world